

PHILIPPINE DEPOSIT INSURANCE CORPORATION

STATEMENT OF COMPREHENSIVE INCOME

For the Period Ended March 31, 2025

(With Comparative Figures for the Period Ended February 28, 2025)

In Million Pesos

	For the Month		Increase/(Decrease)		Year to
	March	February	Amount	%	Date
INCOME					
Assessments	3,330.54	3,334.67	(4.13)	-0.1%	9,991.52
Income from investments	1,506.00	1,312.91	193.09	14.7%	4,117.61
Income from financial assistance	21.70	5.06	16.64	328.9%	31.97
Other income/(loss)	91.89	131.16	(39.27)	-29.9%	441.32
Total Income	4,950.13	4,783.80	166.33	3.5%	14,582.42
EXPENSES					
Operating expenses	169.24	94.33	74.91	79.4%	350.80
Receivership and liquidation	21.31	3.16	18.15	574.4%	45.73
Interest on borrowings	14.74	13.31	1.43	10.7%	42.79
Other losses	0.06	0.03	0.03	71.0%	0.11
Provision for insurance losses	3,100.00	3,200.00	(100.00)	-3.1%	9,500.00
Total Expenses	3,305.35	3,310.83	(5.48)	-0.2%	9,939.43
Net Income	1,644.78	1,472.97	171.81	11.7%	4,642.99
Other Comprehensive Income for the period	-	-	-	0.0%	-
Total Comprehensive Income	1,644.78	1,472.97	171.81	11.7%	4,642.99

Prepared by:

MA. LOURDES R. RELUCIO
DM, Accounting Department

Certified correct by:

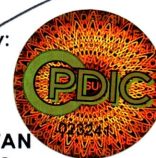
EVANGELINE R. PANTALUNAN
VP, Comptrollership Group

Endorsed by:

SANDRA A. DIAZ
SVP, Management Services Sector

Approved by:

ROBERTO B. TAN
President & CEO



23 APR 2025